

APA KY

KENTUCKY PLANNER

A Publication of the Kentucky Chapter of the American Planning Association

2012 Annual Report



Inside

Recap of APA-KY activities in 2012

plus

KRS 100 & Agricultural Workshop Summary

An Update on Louisville's Land Development Code Review

Regional Representative Reports

University of Louisville Master's in Urban Planning Program

KENTUCKY PLANNER



American Planning Association
Kentucky Chapter

Making Great Communities Happen

A Publication of the Kentucky Chapter of the American Planning Association

EXECUTIVE COMMITTEE (2012 Officers)

President	M. Louise Allen, AICP	mail@kapa.org
Vice President	Ryan K. Libke	rlibke@shlbypz.com
Secretary	Felicia Harper	felicia.harper@ky.gov
Treasurer	Stanford Harvey, AICP	sharvey@urbancollage.com
Immediate Past President	Larisa Sims, AICP	lsims@covingtonky.gov
Professional Development/Education	Amy Williams, AICP	awilliams@tswdesigngroup.com
Planning Commission Representative	Steve Kinkade, CPCU, AAI	steve@kinkadecornell.com
Student Representative	Megan Enyeart	megan.enyeart@gmail.com
Region 1 – Louisville	Aida Copic, AICP	acopic@ridetarc.org
Region 2 – Lexington & Eastern Kentucky	Joshua Karrick, RLA, ASLA, AICP	jkarrick@gmail.hkbell.com
Region 3 – Western Kentucky	Brian R Howard, AICP	howardbr@owensboro.org
Region 4 – Northern Kentucky	Peter J. Klear, AICP	pklear@campbellcountky.org
Region 5 – South Central Kentucky	Adam King, AICP	adamk.hcpdc@hcky.org

ASSOCIATED COMMITTEES (2012 Officers)

Administration Committee	Karen Mohammadi, AICP	karen_mohammadi@gspnet.com
Administration Committee/Membership	Mike Skaggs	mskaggs@ltadd.org
Administration Committee/Awards	Ryan Libke	rlibke@shlbypz.com
Community/Public Outreach Committee	Kendal Baker, AICP	kendal.baker@louisvilleky.gov
Zoning Administration Committee	Kevin P. Costello, AICP	kcostello@boonecountky.org
Legislative/ Technical Support Committee	Joshua Karrick, RLA, ASLA, AICP	jkarrick@gmail.hkbell.com
Financial Committee	Stanford Harvey, AICP	sharvey@urbancollage.com
Programs/ Special Events	Felicia Harper	felicia.harper@ky.gov
Programs/ Special Events	Kendal Baker, AICP	kendal.baker@louisvilleky.gov
Videotape/ CD ROM library	Benjamin D Peterson, AICP	bpeterson@ci.paducah.ky.us
Newsletter Editor	Nicholas Seivers, AICP	nseivers@urban-composition.com
Website Administrator	Ryan Libke	rlibke@shelbypz.com

Message from the President

by Louise Allen, AICP

I enjoyed serving as the APA-KY President for 2009-2012 and I am excited to begin my role as Immediate Past President. Our chapter has remained active during the past several years and much has transpired during my presidency. The most notable accomplishments include:

- Transitioning our newsletter from a printed version to a digital format in order to get information out that is more timely and cost effective;
- Revamping the structure of our Executive Committee by adding regional representation to strengthen our chapter's legislative, outreach, education, and communication efforts;
- Continuing to provide fun, educational and relevant training throughout the Commonwealth for planners, planning commissioners, and other planning officials;
- Retaining chapter membership levels during a touch and go economy while other chapters faced declining memberships; and
- Increasing our chapter dues by only a small margin in order to ensure that APA-KY remains financially sound and can continue to provide quality educational opportunities.

As many of you already know, the presidency has now been turned over to Ryan Libke, who, I feel, will ensure that our Chapter evolves into one of the best chapters in the APA. Ryan and the rest of the Executive Committee have some exciting plans for the future.

I would like to take this opportunity to thank all of those dedicated Executive Committee Members, Special Committee Members, and volunteers that work so hard for APA-KY. Many of you worked on multiple committees and volunteered for committees much longer than expected. You gave more time, effort and dedication than you've been given credit for.

Those dedicated and active members include Board Members, Ryan Libke, Treasurer Stan Harvey, Professional Development Officer Amy Williams and Secretary Felicia Harper. Our newest Executive Committee members-- Aida Copic, Josh Karrick, Brian Howard, Peter Klear and Adam King jumped into their newly created Regional Representative roles with great enthusiasm and helped our chapter strengthen our relationship with membership and legislators throughout the Commonwealth. Our loss was Tulsa's gain when Dawn Warrick left Louisville and vacated her APA-KY PDO position for an exciting new position closer to family. We will also miss former Executive Committee member Felicia Harper. Felicia helped organize dozens of our Chapter conferences as the Co-Chair of the Special Events committee. Also thanks to my predecessor, Larisa Simms, who will be sorely missed, but will surely remain active in the Chapter.

PLANNER'S LIBRARY

Need training hours for AICP Certification Maintenance? Are your colleagues, planning commissioners, or board of adjustment members current on the KRS 147A.027 training requirement?

If not, as a member of APA KY you can take advantage of the training materials lending library.

Currently the library contains just over 20 hours of CM eligible training materials and over 50 hours that meet the requirement in **KRS 147**. There are a variety of topics available including **Law, Ethics, Housing, Design Guidelines**, and others including introductory training for new planning commissioners and board of adjustment members.

For more information please see the APA KY website at <http://kapa.org> and click on the Professional Development heading under About Us. There you will find the request form, descriptions of the materials, and instructions on how to borrow items from the library.

Holding meaningful chapter conference programs is vital to the success of our chapter. It plays a central role in accomplishing the mission of our chapter and is a huge source of revenue for accomplishing everything we do. It takes a lot of dedication, knowledge and perseverance to keep our conference program afloat. Amy Williams has done an outstanding job of organizing and recruiting some of the best talent from around the state including Soumi Basu, James Fausz, Ken Baker and Kaetlin Douglass of the past several year. Thank you to the Conference Committee for everything you do!

Last, but certainly not least, I would like to extend a special thanks to both Karen Mohammadi (Administration Committee) and Nick Seivers (Communication Committee) who volunteer for two very important committees. Karen puts in countless hours dealing with numerous by-law amendments, elections and works hard to recruit new "blood" for our committees. Nick endures endless newsletter deadlines while gently reminding us that our articles are due and that his last name is spelled SEIvers.

I wish Ryan success as he assumes the Presidency of APA-KY. It has been a real pleasure serving as APA-KY's President and I look forward to working with Ryan and the in-coming Board in my new role as Immediate Past President.

APA-KY has a FREE Community Assistance Program

- Does your community struggle with any of the following planning related issues?
- How can planning and zoning promote new economic development opportunities and increase property values in our community?
- Dealing with nuisance related neighborhood disputes?
- What is the best way to meet House Bill 55 continuing education requirements for planning commissioners and board of adjustments members?
- How do we ensure that our community respects due process or ethical issues?
- How do we ensure that our community complies with Chapter 100 of the Kentucky Revised Statutes?
- How do we write a request for proposals for consultant services?

The mission of APA-KY is to "promote planning statewide in order to enhance the quality of life in Kentucky." Consistent with that mission, APA-KY offers a community assistance program whereby public sector planners provide pro bono advice on planning issues to mayors, judge-executives, planners, and other stakeholders from interested communities. The community assistance program offers assistance to local governments on planning organization, administration and implementation, through visits to communities. Planning topics can range from very broad planning issues such as "how do we create a planning commission?" to very specific issues such as how to administer subdivision regulations.

The community assistance program is led by APA-KY's Public Outreach Committee. The committee will identify appropriate professional planners to work with a community based upon their credentials or pertinent experience and the specific need of the community seeking assistance. To provide the most objective assistance, public sector planners volunteer their time and expertise and, if requested, can be selected from areas outside the subject community.

While flexibility is one of the program's most important characteristics, the following guidelines will help communities requesting assistance have the most effective and meaningful process:

- Many questions can be answered quickly via the phone or email. Just look for our Community Assistance contact information at www.kapa.org or email us at mail@kapa.org. If you have a need for more intensive technical help such as how to start a Planning and Zoning program, it will help us serve you better if you fill out a Community Assistance Form that can be found on APA-KY's website.
- Communities requesting assistance should develop a set of questions to be addressed and any corresponding background information they can provide. The community assistance program will be limited to 1 or 2 visits, therefore, providing us with as much background information as possible will help make sure our visits are worthwhile for both your community and APA-KY volunteers.
- Assistance is in the form of voluntary time from professional planners and coordinate meeting dates, locations and times as efficiently as possible.
- It is always advisable to ensure that appropriate stakeholders such as interested citizens and citizen groups, elected officials, or planning commissioners are included in the process.

If your community is interested in APA-KY's Community Assistance Program, please contact Louise Allen at louise.allen@urs.com (502) 643-6156 or Ken Baker at kendal.baker@louisvilleky.gov (502) 574-5822.

Results from APA's 2012 National Poll

"Not only do Americans strongly believe community planning is critical to jump starting our nation's economy, but a majority want to be personally involved with community planning efforts, whether they live in a city, a suburb, a small town, or rural America." - APA Chief Executive Officer Paul Farmer, FAICP

With the U.S. economy struggling, Americans believe community planners should play a major role in helping the nation get back on its feet, according to a national poll released by APA on June 14, 2012.

Two-thirds of Americans believe their community needs more planning to promote economic recovery.

The poll found that Americans want planners to focus most on creating jobs — followed by safety, schools, protecting neighborhoods, and water quality.

See the key findings at <http://www.planning.org/policy/economicrecovery/>



American Planning Association
Kentucky Chapter

Making Great Communities Happen

Join APA-KY today

Learn about best practices in the Commonwealth and the nation receive technical assistance continuing education and networking opportunities.
sharvey@urbancollage.com

PLANNER'S LIBRARY

Ethics in Planning

Planning Ethics for
Planning
Commissioners

Land Use, Planning,
and Environmental
Law

The Legal Framework
for Planning

Planning Law Review

Planning Law in
Perspective

Staying Out of Court
by Avoiding Pitfalls

Introduction to the
Planning Commission

Introduction to the
ZBA

Best of Contemporary
Planning

Complete Streets

Design Guidelines for
Small Towns and
Rural Communities

Green Community
Planning

Green Infrastructure

Historic Preservation,
Sustainability, and the
Recent Past

The Housing Plan

Regulating Big Box
Retail

Regulation of
Nonconforming Uses

An Update on Louisville's Land Development Code Review Process

By Michael Hill, AICP, Planning Coordinator

When Louisville's new mayor, Greg Fischer, took office in 2011 he ordered audits of several departments within Louisville Metro Government, including Planning & Design Services (PDS). One of the many recommendations included in the PDS audit final report was to update and simplify Louisville's Land Development Code (LDC).

The LDC was originally adopted in Louisville Metro, as well as several other jurisdictions in Jefferson County, in 2003 and there have been dozens of amendments to the LDC since that time. The LDC, which is a hybrid form district/zoning district based code, has grown to nearly 1,000 pages and is viewed by many to be a rather complex and difficult document to navigate.

In the fall of 2011 the Land Development Code Improvement Committee was formed of Louisville Metro Government staff, representatives of the development industry, neighborhood and citizen groups, and other interested parties to begin reviewing the LDC. The LDC Improvement Committee began meeting in September of 2011 and decided to break up their tasks into two phases: Round One and Round Two.

Round One would be focused on identifying minor technical changes that will improve the functionality of the LDC. Such minor changes include eliminating redundancies, correcting grammatical and formatting errors and improving cross-referencing throughout the document. Between September 2011 and January 2012 the LDC Improvement Committee met approximately 10 times and was able to identify over 100 minor changes to the LDC text. In March 2012 the Louisville Metro Planning Commission unanimously recommended approval of all of the proposed Round One text amendments. The Louisville Metro Council and other jurisdictions with zoning authority are currently considering the Round One amendments for adoption.

Continued on Page 9...



ehi
consultants
Lexington, KY & Louisville, KY

Planning • Engineering • Environmental

Edward J. Holmes, AICP
President

333 W. Vine Street, Ste 300
Lexington, Kentucky 40507
T 859-425-4881
F 859-254-8639
C 859-321-5643
holmes@ehiconsultants.org
www.ehiconsultants.org



HNTB
www.hntb.com
502.581.0985

urban design + planning

401 West Main Street, Suite 601
Louisville, KY 40202

Community Planning • Urban Design & Landscape Architecture
Environmental Planning • Transportation Planning

KRS 100 & Agriculture Legislative Issues Workshop Summary

by Joshua T. Karrick, PLA, ASLA, AICP

APA-KY Region 2 hosted a workshop in Lexington in mid-October to examine how KRS 100, with regards to subdivision creation and agricultural issue, is impacting planners throughout the commonwealth. Just over 30 planners and allied professionals met at UK's Fayette County Extension Conference Center to hear presentations and discussions led by a distinguished team of presenters including Tim Butler, Attorney, AICP; Louise Allen, AICP; Glenn Price, Attorney, AICP; and Kevin Costello, AICP.

The morning started off with Tim Butler, Attorney, AICP, giving an in-depth review and presentation of the KRS 100 definition of "subdivision".

- "Subdivision" means the division of a parcel of land into three (3) or more lots or parcels except in a county containing a city of the first, second or third class or in an urban-county government or consolidated local government where a subdivision means the division of a parcel of land into two (2) or more lots or parcels; for the purpose, whether immediate or future, of sale, lease, or building development, or if a new street is involved, any division of a parcel of land; provided that a division of land for agricultural use and not involving a new street shall not be deemed a subdivision. The term includes resubdivision and when appropriate to the context, shall relate to the process of subdivision or to the land subdivided; any division or redivision of land into parcels of less than one (1) acre occurring within twelve (12) months following a division of the same land shall be deemed a subdivision within the meaning of this section;

From this definition, his presentation evolved into a discussion with the assistance of Glenn Price, Attorney, AICP, of the typical and unique examples of subdivision requests and parcel creations that have come through local planning departments over the last couple of years related to the agricultural exemption. One in particular that found its way into court for final determination was the Nash case in Northern Kentucky (Nash et. al. v. Campbell Co. Fiscal Court, 345 S.W. 3d 811, (Ky 2011) decided April 24, 2011). Some of the outcomes of the Nash case have provided clarity to the role of the County Clerk when it comes to recording deeds. Now, the Clerk can refuse to record a deed and send it to the Planning Commission or County Attorney for review and advice, if they see that it may fall under definition of subdivision. It also indicates that there are at least three ways to dedicate a street; by deed, by plat, or by prescription. More information on this case can be found online at <http://caselaw.findlaw.com/ky-supreme-court/1565700.html>.

Continued on page 7

Kriss Lowry & Associates, Inc.



Kristen M. Lowry, AICP
President

227 South Rays Fork Road
Corinth, KY 41010-3027
Phone: (502) 857-2800

Web: www.krisslowry.com
Email: Kriss@krisslowry.com

MKSK

Continued from page 6

The second presentation was led by Louise Allen, AICP. She detailed the emerging trend of “agri-tourism” which has been loosely defined as the practice of visiting an agribusiness, horticultural, or agricultural operation, including, but not limited to, a farm, orchard, winery, greenhouse, hunting preserve, a companion animal or livestock show, for the purpose of recreation, education, or active involvement in the operation, other than as a contractor or employee of the operation.

This new business model reflects how there has been a paradigm shift from traditional farm-to-market practice. Now, the farm is the market. How do planners apply regulations that would typically govern commercial zoning in areas that are zoned agricultural? Some of the concerns discussed were; enforcing limits on specific commercial or recreational activities, limits on scale, septic system and sewage disposal considerations, limits on the number of visitors, nuisances, traffic congestion and general safety. The goal of the presentation was to start a conversation to see what the issues are and how others are dealing with any problems arising from this new business sector in their communities.

Finally, Kevin Costello, AICP, led a discussion about the Legislative Committee and its efforts to coordinate with other organizations to identify and track future legislative issues that relate to these agricultural topics and other issues relevant to planning professionals. If you are interested in joining the committee or just want additional information, please contact me at jkarrick@hkbell.com.



**CDM
Smith**

listen. think. deliver.

**PARSONS
BRINCKERHOFF**

2012 Legislative Update

by Joshua T. Karrick, PLA, ASLA, AICP

2012 started off as a busy year for the Legislative Committee. During the 2012 Legislative General Session, SB62 was introduced by Senator Damon Thayer who represents Scott, Grant, and southern Kenton County. The official details of the bill can be found at the following web address <http://www.lrc.ky.gov/record/12RS/SB62.htm>. The general issues with the bill from APA-KY's perspective were:

- This issue is a local issue that should be addressed at a local level,
- The local fight was already taking place in circuit court and federal court litigation,
- The threshold of 25% of the last presidential election is very common throughout Kentucky Revised Statutes that deal with dissolution, removal, or recall. There are nine laws that pertain to these issues, two have higher thresholds, two have lower (20%) and the others are the same as NKAPC. This is important because the bill's sponsor claims NKAPC's threshold is among the highest standard. Changing it to 15% would make it the lowest standard in the state,
- Decreasing the threshold for a referendum sends a signal to special interest groups across the Commonwealth that the General Assembly is open to making referendums easier to pursue.

Sen. Thayer chaired the State & Local Government committee in the Senate and the bill quickly moved from there to the floor. After three readings in a little under a week the bill passed 23-12 and moved to the House. The bill then moved to the House's State Government Committee. At that point APA-KY was able, with the assistance of other allied professional groups, to meet and communicate with the committee members as well as their local Representatives and kept the bill from moving any further.

When issues like this arise, the Legislative Committee tries to get the word out as quickly and loudly as possible. We'd like to thank all of you who assisted in helping on this effort and look forward your participation in future efforts when needed.

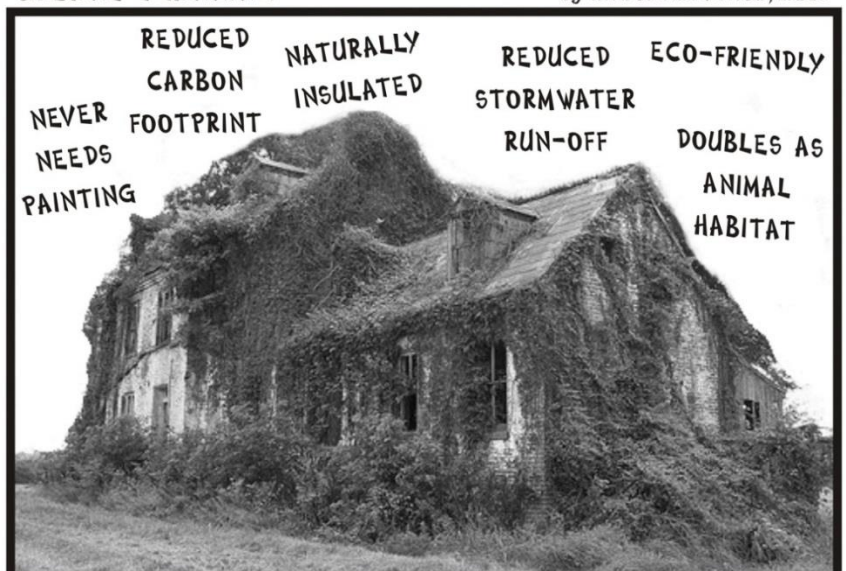


Architecture Engineering Planning

Groundbreaking by Design.

URBANE PLANNING

by Robert A. Jonas, AICP



The latest trend in "green" architecture...the Chia-house!

Jonas@one.net

LOUISVILLE LAND DEVELOPMENT CODE UPDATE

Continued from Page 5

Round Two is focused on more significant issues and ideas related to the Land Development Code. The 15 member LDC Main Committee meets monthly to review the issues the nine LDC sub-committees have been discussing. The sub-committees, which began meeting twice per month in June 2012, are: Permitted & Conditional Use Review, Form Districts, Infill Development Standards, Fair & Affordable Housing, Transportation & Mobility, Major & Minor Subdivisions, Landscaping and Tree Preservation, and Miscellaneous Research. The sub-committee meetings are open to the public and anyone is welcome to participate in the discussions.

Final recommendations from each sub-committee will be presented to the LDC Main Committee for discussion and action. Proposed LDC text amendments will then have a Planning Commission public hearing before being considered by Louisville Metro Council and other jurisdictions with zoning authority.

While there is no official deadline for this code revision process, it is anticipated that these LDC committee meetings will extend well into 2013. Hopefully, by the end of 2013 Louisville Metro will have a new and improved version of the Land Development Code in place.

Questions regarding the LDC revision process can be directed to Michael Hill, AICP at michael.hill@louisvilleky.gov.

Additional information about the LDC revision process can be found online at: <http://www.louisvilleky.gov/PlanningDesign/Land+Development+Code+Improvement+Committee.htm>.



URBAN Collage

URBAN DESIGN

buildings & sites
schools & campuses
neighborhoods & districts
corridors & centers
cities & towns

201 West Short Street, Suite 820
Lexington, KY 40507
P 859.519.1291
F 859.519.1268
E sharvey@urbancollage.com

principal
STANFORD HARVEY, AICP

follow us
@apakentucky



**TAYLOR
SIEFKER
WILLIAMS**

design group

Amy M. Williams, AICP
Scott L. Siefker, ASLA, AICP
Ron L. Taylor, ASLA, RLA

landscape architecture | community planning | urban design | visioning | strategic planning

LOUISVILLE
811 South Second Street
Louisville, KY 40203

INDIANAPOLIS
133 West Market Street #325
Indianapolis, IN 46204

p: 502.992.9481
f: 502.992.0397
www.TSWDesignGroup.com

Reports from the Regional Representatives

Aida Copic, AICP: Region 1 – Louisville

Includes all Kentucky counties in the KIPDA ADD

APA-KY Region 1 hosted its very first Planning Forum in November 2012 at the Urban Design Studio in Louisville. The event was a kickoff meeting for a series of Planning Forum discussions and it was a great success. Planners from Region 1 meet to discuss current planning topics and projects in the Louisville area including the Land Development Code amendments and Comprehensive Plan update, Vision Louisville initiatives, transportation planning ideas, and everything in between.



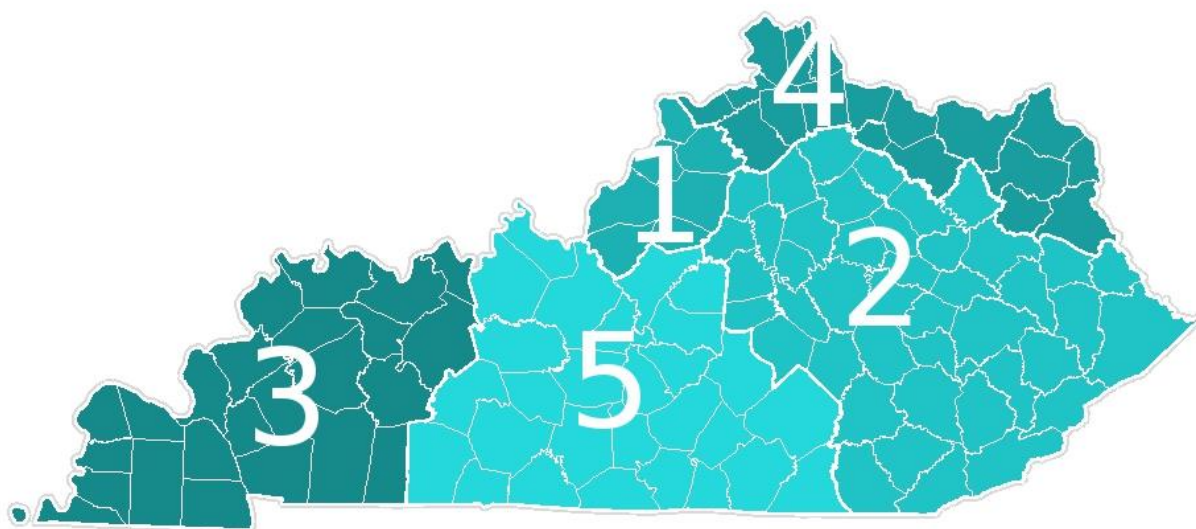
Based on the fellow planners feedback, there is a huge interest to continue with the planning forum series. Region 1 planning forum will grow into regular four times a year event. Planners and other professionals involved in the community planning and development will meet for informal, open forum discussions about local and regional planning trends. Presentations will be organized to share information about progress on major planning initiatives and projects.

Provide your input and suggestions by contacting your regional representative; share your ideas and topics for discussion. The second planning forum event will be organized in late March of 2013.

Joshua Karrick, RLA, ASLA, AICP: Region 2 – Lexington & Eastern Kentucky

Includes all counties in the Big Sandy, Bluegrass, and Cumberland Valley ADDs

Joshua Karrick hosted a discussion on subdivision of parcels and the evolving business of agriculture, and particularly agri-tourism at the KRS 100 & Agricultural Issues Workshop in October 2012. A summary of the workshop begins on page 6.



For more information on regional events, please visit the APA-KY website at www.kapa.org, or email us at mail@kapa.org.

APA-KY Regional Format: Region 1 – Louisville, Region 2 – Lexington & Eastern Kentucky, Region 3 – Western Kentucky, Region 4 – Northern Kentucky, Region 5 – South Central Kentucky



Brian R. Howard, AICP: Region 3 – Western Kentucky

Includes all counties in the Green River, Pennyrite, and Purchase ADDs

As the regional representative for Western Kentucky, the main goal of my first year was to provide training opportunities to the planners and board members of the region. The Western Kentucky Region is geographically isolated from the main hubs of activity in the state (the Louisville, Northern Kentucky, Lexington triangle). With shrinking budgets, travel expenses for planners and board members to attend training sessions several hours away becomes more difficult to obtain and justify. To help remedy this scenario, a half-day training session was held in Madisonville, KY that fulfilled both AICP and HB 55 training requirements. The sessions included four hours of training that received Certificate Maintenance approval for AICP planners and included both law and ethics credits. Reviews of the sessions were very positive and the central location of Madisonville was ideal. I must extend a special thanks to Cindy Young with the Hopkins County Joint Planning Commission for her hard work in acquiring space for the training session and organizing lunch and refreshments.

In the coming year, I plan to organize additional training sessions, and possibly a social event, within the region. All training sessions will be submitted to APA for CM approval for AICP planners and will satisfy HB 55 requirements. Any suggestions from planners or board members within the region in regards to desired locations, topics, or events can be directed to me at howardbr@owensboro.org.



Peter J. Klear, AICP: Region 4 – Northern Kentucky

Includes all counties in the Buffalo Trace, FIVCO, and Northern Kentucky ADDs

The Boone County Public Library, with assistance of the Boone County Planning Commission and Boone County Historic Preservation Board, is hosting a rural heritage conference. The conference will consist of two separate content tracks: Planning and History/ Genealogy. The Conference will take place from May 30 – June 1, 2013 in Boone County. Continuing education credits are available through this conference. Details to be announced soon.



Adam King, AICP: Region 5 – South Central Kentucky

Includes all counties in the Barren River, Lake Cumberland, and Lincoln Trail ADDs

In 2012, Regional Representative, Adam King, AICP held two planners breakfast at the Cracker Barrel in Elizabethtown. Seven planners attended the breakfast in August and seven planners also attended the breakfast held in November. The planners from Elizabethtown, Radcliff, Vine Grove, Hardin County, Nelson County, Glasgow-Barren County, and QK4 discussed issues ranging from Agriculture Uses to Conditional Use Permits along with the development trends in their respective communities.

After serving for a year as the Region 5 (South-Central KY) Representative to KAPA, Adam King, AICP was elected by his peers to serve as the Secretary of APA-KY for 2013-2014. He will be succeeded by Mike Skaggs, a Transportation Planner with the Lincoln Trail Area Development District and the Radcliff/Elizabethtown MPO.



APA-KY 2013 SPONSORSHIP OPPORTUNITIES

Firm/Organization Name:

Contact Person:

Address:

Phone/Fax:

Website/Email:

Please select the category that your firm or organization is interested in sponsoring by filling in the cost total in the appropriate category.

<u>Annual Sponsorship Opportunities - Ala Carte</u>		<u>Cost</u>	<u>Total</u>
Publications Sponsor (APA-KY Website, Annual Report, Quarterly E-Newsletter)		\$250	\$
State Conferences		\$300	\$
(Sponsorship of the APA-KY Spring Conference and/or Fall Conference includes one free conference registration, advertisement at the conference and recognition on the programs and mailers)			
<u>Package Sponsorship Opportunities</u>		<u>Cost</u>	<u>Total</u>
Corporate Sponsor Includes the following		\$500	\$
Publications Sponsor			
1 in-state conference in 2013			
		Total	\$

Please make check payable to **KAPA** and mail to:

Stanford Harvey, AICP

c/o Urban Collage, Inc.

201 W. Short St, Suite 820

Lexington, KY 40507

Phone: 859-519-1291

Fax: 859-519-1268

sharvey@urbancollage.com

Don't forget

to enclose a business card or
email your company's logo!

Thank you for your support!

KENTUCKY CHAPTER - AMERICAN PLANNING ASSOCIATION

Fiscal Year 2013 Budget

	FY 2012	FY 2013	
	BUDGET	BUDGET	DIFFERENCE
<u>REVENUES</u>			
Transfer Funds	0.00	0.00	-
APA Rebate	5,000.00	6,000.00	1000.00
Conferences	8,500.00	23,000.00	14,500.00
KAPA Affiliate Dues	300.00	300.00	-
Seminars/Workshops	0.00	0.00	-
Sponsors	5,000.00	5,000.00	-
Professional Development (Video, Manuals)	300.00	300.00	-
Miscellaneous	250.00	0.00	(250.00)
Total Revenue	\$19,350.00	\$19,350.00	\$ 15,250.00
	FY 2012	FY 2013	
	BUDGET	BUDGET	DIFFERENCE
<u>EXPENSES</u>			
Publications/Newsletter	3,500.00	2,500.00	(1,000.00)
Program Development/Conf./			
Seminars/Workshops	8,500.00	22,000.00	13,500.00
Professional Development	1,000.00	1,000.00	-
Executive	4,500.00	4,500.00	-
Special Projects*	1,000.00	1,000.00	-
Legislative	400.00	400.00	150.00
Comm. Outreach/Conf. Sponsors	1,000.00	1,000.00	-
Public Relations/Awards	550.00	550.00	-
Administrative	700.00	700.00	-
University of Louisville Scholarship**	2,000.00	2,000.00	-
Postage	1,000.00	1,000.00	-
Membership	400.00	2,500.00	-
Total Expenses	\$26,650.00	\$39,150.00	(\$12,500.00)
TOTAL REVENUE			
MINUS EXPENSES	-\$7,300.00	-\$4,550.00	

Treasurer's Report

by Stanford Harvey, AICP

I wanted to provide an update on APA-KY's finances and budgets for 2013. Thanks to close stewardship by the Executive Board and our continued success with Programs and Conferences, APA-KY finished 2012 slightly in the black despite budgeting a slight loss.

In December, the Executive Committee approved the official 2013 budget. It projects higher revenues and expenses for 2013. Highlights include:

- a slight increase in APA membership and therefore APA rebates due to an improving economy;
- significantly increased revenue from Conferences by holding two State events and receiving the 2012 OKI Conference revenue in 2013;
- a continued decrease in Publications expenses due to digital communications;
- an increase in the budget for Programs and Conferences to support two state events in 2013;
- continued support of scholarships at the University of Louisville;
- continued financial support for events in each APA-KY Region.

We are always looking to increase the membership and involvement in APA-KY. We are also soliciting sponsors for 2013 and would sincerely appreciate any support of interested firms and organizations. A sponsorship form is located within this Annual Report and on the website at www.kapa.org.

As always, please feel free to contact me with any questions at (859) 519-1291 or my email is sharvey@urbancollage.com.

Kentucky Would Like To Welcome Its Newest AICP Members!

We would like to say congratulations and welcome to Kentucky's newest AICP members into APA's professional institute! They have demonstrated a commitment to high standards of professional practice and understanding of the theories and tools used in planning. To become certified, an APA member must meet requirements for education and experience, pass the AICP Comprehensive Planning Examination, pledge to uphold the AICP Code of Ethics and Professional Conduct, and engage in ongoing professional development. For more information about becoming an AICP Certified Planner, contact Amy Williams, AICP at awilliams@TSWDesignGroup.com

CONGRATULATIONS TO.....	
Curt Freese (Henderson)	Elizabeth Johnson (Covington)
Doug Heberle (QK4)	Nakitta Moya (KL&A)
Dave Herndon (Hopkinsville-Christian County)	Joseph Reverman (Louisville Metro)
Michael Ionna (NKAPC)	Angela Satterlee (Hopkinsville-Christian County)
	Jodi Smiley (Environs)

AICP CERTIFICATION

The May 2013 application window is closed . The test will be held May 6-20, 2013. If anyone studying needs help or would like to borrow study materials, feel free to contact Amy Williams, AICP at awilliams@TSWDesignGroup.com

More information on AICP training opportunities will be sent by email to APA-KY members.

U of L Planning Degree Gains Recognition

by Dr. Dave Simpson, AICP

Department Chair and Director, Master of Urban Planning Program

University of Louisville

and Nathan Bush

APA-KY Student Representative

UofL extends accreditation

#10

Program In the South
Region

In 2012, as a result of a required progress report to the Planning Accreditation Board (PAB), the Master of Urban Planning Degree had its initial accreditation extended by an additional three years, and will maintain its accreditation status until 2016.

...and gains in reputation

#23

Nationally, as ranked
by Planning Educators

Perhaps more importantly, the program has been recognized nationally. This is remarkable given that the degree program started in 2000. In the most recent "Planetizen Guide to Graduate Programs in Urban Planning, 2012 edition," and the only ranking of Urban Planning programs, our program was ranked 10th in the south region (includes Texas, Florida, North Carolina and surrounding states), and ranked 23rd in the country as ranked by planning educators. We were unranked in the previous edition of the guide.

Graduates of the program are working in leadership positions locally and regionally, and have also found planning work across the country. The program continues to offer opportunities to engage with the local and regional communities. Concentrations in the degree include: Land Use and Environmental Planning, Administration of Planning Organizations, Spatial Analysis for Planning, and Housing and Community Development.

Recent changes to the program include the new offering of a joint Masters of Urban Planning and Masters in Public Health (MUP/MPH), and the availability of a Graduate Certificate in Real Estate Development.

Outreach

The Planning Student Organization (PSO) has had an active year engaging with local planners, developers, and non-profits. Students were welcomed to the office of Louisville Downtown Development Corporation (LDDC) to discuss the operation of their non-profit and their service to Louisville Metro Government, as the officially designated agent for development activities downtown.

John Bucher, a Master of Urban Planning (MUP) student at UL, expressed his enthusiasm for this event: "What is important about the LDDC for the planning program is that a meaningful relationship has been established in the last six months that didn't exist before."

The Department of Urban and Public Affairs has interacted with the LDDC in a limited way in the past, but that is changing with PSO events, two MUP interns within their office, and a new partnership on a downtown neighborhood project.

More information
on the University of
Louisville Master's in
Urban Planning
program can be found
here:

<http://louisville.edu/upa>

Projects in the Community

The Spring 2013 Capstone Studio – held at the Urban Design Studio meeting at 3rd St. and Muhammad Ali Blvd. – is giving second year MUP students an opportunity to coordinate with the LDDC on a developing, new project in downtown. The project is titled the Living City Louisville NuLu (LCLNL). This partnership with LDDC also includes the Living City Block (LCB) organization that has been pioneering this block by block initiative in other cities. The LCB has charged themselves with the mission “to create and implement a replicable, exportable, scalable and economically viable framework for the resource efficient regeneration of existing cities, one block at a time.” Three zones are being studied for the improvement of urban neighborhoods in downtown Louisville.

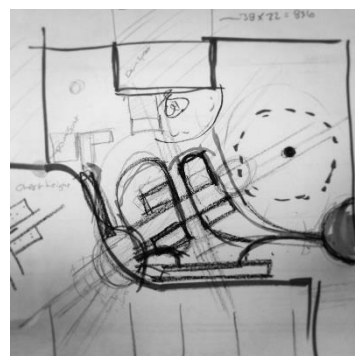


Education & Health

As health disparities grow in the United States researchers are increasingly attributing the rising threat of degraded public health and quality of life – at least in part – to the intersection of the built environment, patterns of development and transportation systems, and behavioral choices. As such, the bond between the state of the nation's health and the environment of its cities has become clear, and the path dependency between these two fields has solidified. The academy is responding to this evident convergence of challenges with new partnerships in education to better equip future researchers and practitioners in the fields of urban planning and public health to assist in solving these challenges. The University of Louisville took an important step forward with the establishment of a new master's degree program allowing students to earn two degrees: Master of Urban Planning (MUP) and Master of Public Health (MPH).



Katie Horlander, the first MUP student to matriculate into the dual program had this to say about the new program, “Inspired by my own passions and another professional's credentials, I had intentionally set out to obtain both degrees upon entering the University of Louisville for graduate school. The advent of the new dual degree program came at just the right time for me, ultimately saving me a year's worth of time and expenses. I hadn't even considered the possibility a university would offer this as an option. It's a perfect fit for anyone interested in the way humans and the environment interact in an urban setting and their effect on each other's health.”



Initiatives

The PSO in conjunction with the Department of Urban and Public Affairs is sponsoring a horticulture zone on the grounds of the UPA building at 426 W Bloom St. A design and planning initiative is underway to complete a zone that will include spaces to grow a variety of plants and urban furniture for seating. This project is promoting the evaluation of land use, urban horticulture, infill and mixed-use spaces, and the benefit of greenscapes in urban environments.

Moving Forward

Mr. Bush hopes, as President of the Planning Student Organization, that APA-KY continues to foster a more interlinked relationship with the urban planning student body at UL. This could include excursions to the offices that the members of the Executive Committee represent, guided tours of planning projects in the Commonwealth, professional development events such as urban forums, mentoring, and AICP preparation chats, or the integration of student presentations at the yearly conference. I look forward to serving the remainder of my appointment as Student Representative for APA-KY and to meeting more members who are excited to transform the Commonwealth of Kentucky and the cities within to be more livable places.



APA-KY 2012 Awards

Congratulations to all of the 2012 APA-KY Awards winners, presented by Ryan Libke, Awards Committee Chair and Vice President of APA-KY.

[hcky.org/
planning-
development.
asp](http://hcky.org/planning-development.asp)

#1. **Hardin County** – Wesley Wright, Senior Planner; Chris Hunsinger, Director; Adam King, Planner

The Development Guidance System, Zoning Ordinance, 2009 (Unincorporated Hardin County, Kentucky) Addressed the expansion of the Urban Area to promote orderly, planned growth of the unincorporated areas of Hardin County. With the transformation of Fort Knox from an Armor Center to a Human Resource Center and industrial growth, additional residential classifications were crafted to reflect the needs of the evolving community.

lojic.org

#2. **LOJIC** – Jane Poole, GISP Customer Support Administrator; Julie Price, GISP Application Administrator; Brian Meyers, GISP Application Analyst

The LOJIC Online Map: An interactive mapping resource to support land planning and development (the Louisville/Jefferson County Information Consortium (LOJIC)) The LOJIC Online Map allows users to select from various cached base maps, including a street map, current and historical aerial imagery, and planimetric/topographic. The map provides easy, interactive, layer-specific access to a suite of local geospatial data, including property data, environmental data, and planning data.

[ruppdistrict
.com](http://ruppdistrict.com)

#3. **Rupp Arena** – Bill Sallee, Planning Manager, LFUCG, Stan Harvey, Urban Collage

Rupp Arena Arts and Entertainment District The Rupp Arena Arts and Entertainment District plan is an imperative step to a positive future for the urban core of Lexington, KY. The plan calls for the revitalization of 27 acres of downtown surface parking, the reconstitution of urban residential neighborhoods, the creation of a public centerpiece in the Town Branch Commons, and the keystone projects a reinvented Rupp Arena and New Convention Center. Each of these projects act as a catalyst for attracting and retaining professionals, visitors, residents, and retirees to Lexington and builds upon the partnership and physical connection between the city and the University of Kentucky.

[jefferson.
kyschools.
us/projects/
greencity/Urb
anTreeCanop
yPlan.pdf](http://jefferson.kyschools.us/projects/greencity/UrbanTreeCanopyPlan.pdf)

#4. **Urban Tree Canopy Plan** – Evan Conder

Urban Tree Canopy Plan (University of Louisville Brandeis School of Law, Land Use: Planning Law course) Critical issues facing the urban forest in Louisville Metro include canopy threats such as development, invasive species, diseases, insufficient data, inadequate Forestry Division funding and staffing, minimal community support and involvement, and the current economic climate, challenge the capacity of Louisville Metro to manage this resource. The plan for the future of Louisville Metro's urban forest includes a vision, guiding principles, and goals.

[louisvilleky.
gov/Planning
Design/Neighb
orhood+Plans/](http://louisvilleky.gov/PlanningDesign/Neighborhood+Plans/)

#5. **SoBro** – Ken Baker, Planning Supervisor, Louisville Metro

SoBro Planned Development District – Louisville, KY (RATIO Architects, Inc for Louisville Metro Planning and Design Services) The SoBro Planned Development District (PDD) builds upon those plan recommendations and provides incentives and other tools for neighborhood improvement with the force of an ordinance. The SoBro PDD encourages contextual redevelopment through the establishment of character-based subareas. The ordinance acknowledges the unique conditions of the SoBro Neighborhood and provides a compatible transition between Downtown and the primary residential and historic Old Louisville neighborhood to the south.

Coming Up in 2013

APA-KY Spring Conference

Lake Cumberland State Park Resort: May 8 -10, 2013

“Connecting Kentucky’s Communities”

Join fellow Kentucky planners at Lake Cumberland State Park Resort for the APA-KY Spring Conference! Mark your calendars for May 8th-10th and get ready for dynamic education sessions, exciting networking opportunities, and some good old planning fun! An opening reception will be held at the lodge on Wednesday evening, followed by breakout sessions Thursday and Friday. An AICP Exam Study Course will be offered as well as Planning Commissioner Training. Also, make sure you reserve a room so you can network with other planners during Thursday evening’s reception. Rooms are limited and can be reserved by calling 800-325-1709; the KAPA group rate is \$71.96/night plus tax for lodge rooms, \$99.95/night plus tax for one bedroom cottages and \$125.96/night plus tax for two bedroom cottages. These rates are available until April 7, 2013.

For more information on the 2013 Spring Conference, visit www.kapa.org or contact Lindsay Walker (walkerli@pbworld.com).

APA National Conference

Hyatt Regency Chicago: April 13 – 17, 2013

Look for Information on the Ohio, Kentucky, Indiana reception being planned during the conference.

Thanks!

APA-KY would like to recognize the contributions made by two of our outgoing board members: **Larisa Sims**, AICP, Immediate Past President, and **Felicia Harper**, Secretary. Larisa and Felicia have worked to improve the APA-KY organization and programs for many years. Larisa will continue to develop and improve the City of Covington, KY while Felicia will foster economic strategies for the communities in the Louisville area MPO/ADD. We wish them the best of luck!



Kentucky Chapter
American Planning Association
2332 Royal Drive
Fort Mitchell, KY 41017

NON-PROFIT
ORGANIZATION
U.S. POSTAGE
PAID
LOUISVILLE, KY
PERMIT #1

Join our community



APA-KY Calendar of Events

2013

Mar 22	APA-KY Executive Committee Meeting in Louisville
Apr 13 – 17	National Planning Conference in Chicago
May 8 – 10	APA-KY Spring Conference at Lake Cumberland State Resort Park
May 9	APA-KY Annual Membership Meeting at Lake Cumberland
May 9	APA-KY Executive Committee Meeting at Lake Cumberland
May 6 – 20	AICP Exam Testing Window
May 30 – 31	Boone County Rural Heritage Conference
June 1	Boone County Rural Heritage Conference
July 12	APA-KY Executive Committee Meeting in Lexington
Sept 30	Kentucky GIS Conference in Louisville
Oct 1 – 2	Kentucky GIS Conference in Louisville
Oct TBA	APA-KY Fall Conference at Location TBA
Oct TBA	APA-KY Executive Committee Meeting at Fall Conference
October	NATIONAL PLANNING MONTH
Nov 8	APA-KY Executive Committee Meeting in Louisville
Dec 6	APA-KY Executive Committee Meeting at Location TBA